

# \$69,000 - Lot 15 Campsite Road, Plamondon

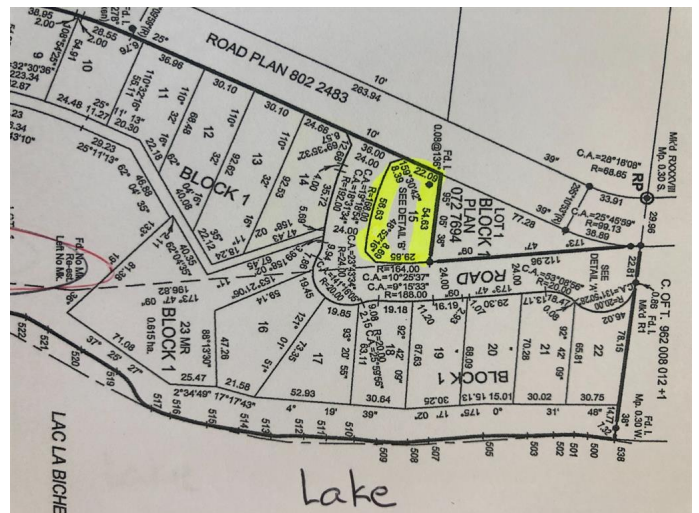
MLS® #A2112323

**\$69,000**

0 Bedroom, 0.00 Bathroom,  
Land on 0.51 Acres

NONE, Plamondon, Alberta

You can't get any closer to the lake for this price. Just a one minute walk and you're sitting on a large sandy beach. There are NO BUILDING RESTRICTIONS and RV'S are allowed here at Amity Beach subdivision located on the west shore of Lac La Biche Lake. Located near Plamondon White Sands Resort, this area is just 2.5 hours from Fort McMurray or 2 hours drive north of Edmonton. This 1/2 acre parcel is treed and has gas and power at the property line and is considered a lake back lot. A very private RV lot could be created here! GST applicable.



## Essential Information

MLS® #	A2112323
Price	\$69,000
Bathrooms	0.00
Acres	0.51
Type	Land
Sub-Type	Residential Land
Status	Active

## Community Information

Address	Lot 15 Campsite Road
Subdivision	NONE
City	Plamondon
County	Lac La Biche County
Province	Alberta
Postal Code	T0A 2T0

## Amenities

Utilities	Electricity at Lot Line, Natural Gas at Lot Line
Is Waterfront	Yes

## Exterior

Lot Description	Brush, Greenbelt, Level, Waterfront
-----------------	-------------------------------------

## Additional Information

Date Listed	March 4th, 2024
Days on Market	527
Zoning	CR

## Listing Details

Listing Office	PEOPLE 1st REALTY
----------------	-------------------

Data is supplied by Pillar 9â„¢ MLS® System. Pillar 9â„¢ is the owner of the copyright in its MLS® System. Data is deemed reliable but is not guaranteed accurate by Pillar 9â„¢. The trademarks MLS®, Multiple Listing Service® and the associated logos are owned by The Canadian Real Estate Association (CREA) and identify the quality of services provided by real estate professionals who are members of CREA. Used under license.