

\$1,750,000 - 51 Kaska Road, Sherwood Park

MLS® #A2180737

\$1,750,000

0 Bedroom, 0.00 Bathroom,
Commercial on 0.00 Acres

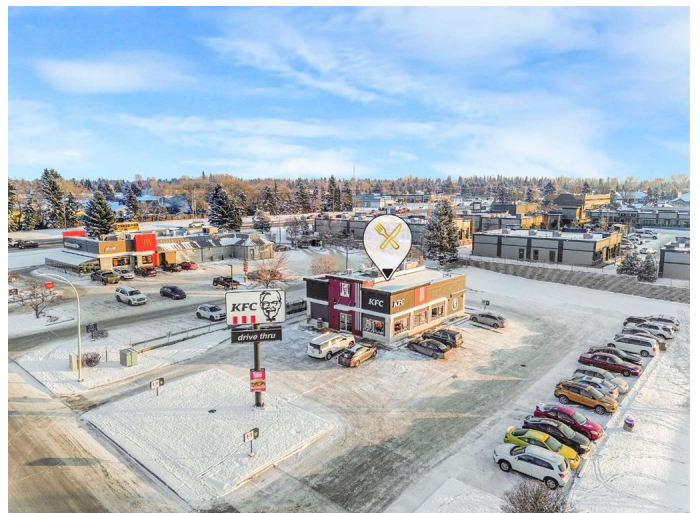
Broadmoor Centre, Sherwood Park, Alberta

Explore the rare chance to invest in a coveted retail zone within Sherwood Park. This 184' x 236' (1 acre) site is ideally situated in a bustling commercial district, mere steps from surrounding development and quickly accessible to Baseline Road and Broadmoor Boulevard. The sizeable 1 Acre lot comes fully equipped with a 2,292 SF restaurant in pristine condition and 35 on-site parking stalls. An attractive destination with high visibility for advertising and endless customer crossover from surrounding businesses. Existing tenant is a well known franchise that has been in place since 2005. At the expiration of the lease, the building owner will be positioned to increase the rent significantly to reflect current market rates. Don't pass up on this valuable opportunity to own the ideal asset in an active suburban community. This is the perfect long-hold investment for a future redevelopment play.

Built in 1981

Essential Information

| | |
|------------|-------------|
| MLS® # | A2180737 |
| Price | \$1,750,000 |
| Bathrooms | 0.00 |
| Acres | 0.00 |
| Year Built | 1981 |
| Type | Commercial |
| Sub-Type | Retail |



Status Active

Community Information

Address 51 Kaska Road
Subdivision Broadmoor Centre
City Sherwood Park
County Strahcona County
Province Alberta
Postal Code T8A 4E7

Amenities

Parking Spaces 35

Additional Information

Date Listed November 25th, 2024
Days on Market 161
Zoning C5

Listing Details

Listing Office CIR Realty

Data is supplied by Pillar 9â„¢ MLS® System. Pillar 9â„¢ is the owner of the copyright in its MLS® System. Data is deemed reliable but is not guaranteed accurate by Pillar 9â„¢. The trademarks MLS®, Multiple Listing Service® and the associated logos are owned by The Canadian Real Estate Association (CREA) and identify the quality of services provided by real estate professionals who are members of CREA. Used under license.