

# \$250,000 - 1820 20 Avenue, Nanton

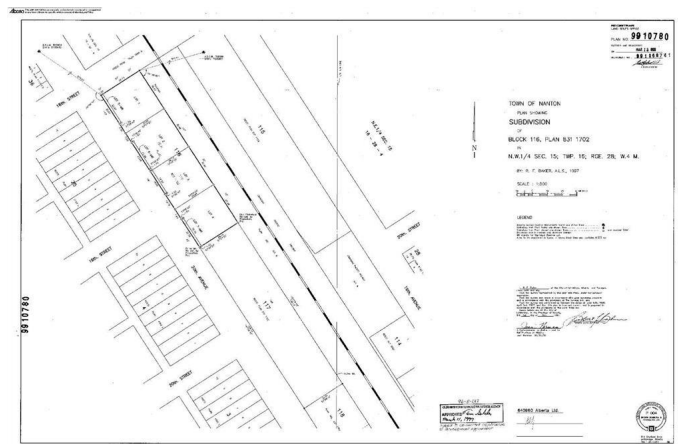
MLS® #A2188695

**\$250,000**

0 Bedroom, 0.00 Bathroom,  
Commercial on 0.00 Acres

NONE, Nanton, Alberta

Located on the north bound Highway # 2:  
There is two (2) 100 ft by 100 ft commercial lots available. These 2 lots are being sold as a single parcel. Each has a Land Title. Lots are flat and rectangular. Combined this gives you a Frontage of 200 Feet and a depth of 100 Feet. Services are at the property lot line. Excellent location for the business that would like highway frontage location. This is a Land Sale only. Should you be an interested buyer, an additional 2 lots of this same size could be available that are located next to it. The full 4 lot parcel would extend to the Intersection of Highway 533 and # 2, giving you 400 feet of frontage and a depth of 100 feet and the choice of connection of 1 to 4 separate services. These additional 2 lot costs can be negotiated. There are few lots of this size available in the Town of Nanton, especially close to the downtown area and nearby sport facilities in Nanton.



## Essential Information

MLS® #	A2188695
Price	\$250,000
Bathrooms	0.00
Acres	0.00
Type	Commercial
Sub-Type	Mixed Use
Status	Active

## Community Information

Address 1820 20 Avenue  
Subdivision NONE  
City Nanton  
County Willow Creek No. 26, M.D. of  
Province Alberta  
Postal Code T0L 1R0

## Amenities

Utilities Electricity at Lot Line, Sewer Available, Water At Lot Line  
Parking Spaces 20

## Exterior

Lot Description Backs on to Park/Green Space, City Lot, Near Golf Course, Level

## Additional Information

Date Listed January 18th, 2025  
Days on Market 109  
Zoning M-DWT

## Listing Details

Listing Office Lively Realty Ltd.

Data is supplied by Pillar 9â„¢ MLSÂ® System. Pillar 9â„¢ is the owner of the copyright in its MLSÂ® System. Data is deemed reliable but is not guaranteed accurate by Pillar 9â„¢. The trademarks MLSÂ®, Multiple Listing ServiceÂ® and the associated logos are owned by The Canadian Real Estate Association (CREA) and identify the quality of services provided by real estate professionals who are members of CREA. Used under license.