

\$369,000 - 505, 1140 15 Avenue Sw, Calgary

MLS® #A2191142

\$369,000

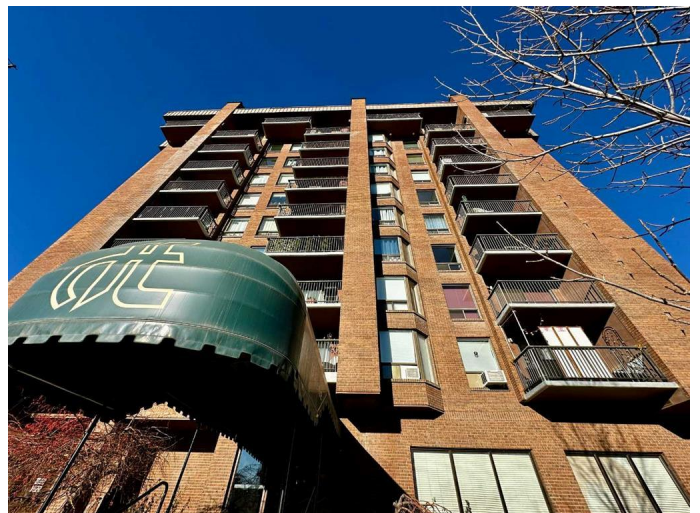
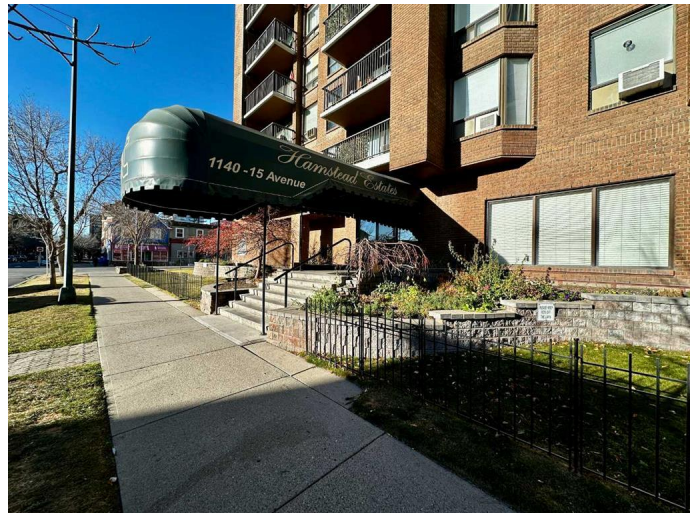
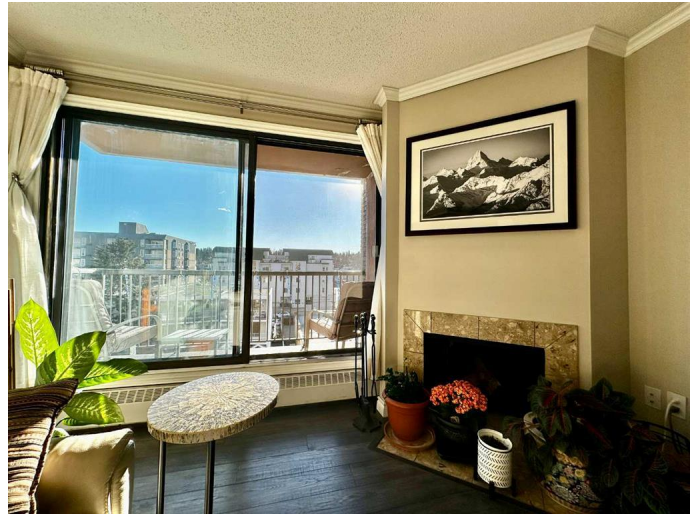
2 Bedroom, 2.00 Bathroom, 902 sqft
Residential on 0.00 Acres

Beltline, Calgary, Alberta

Extraordinary opportunity to live in this perfectly situated 2 bedroom 2 bathroom condo in the bustling community of Beltline. Enjoy the best of downtown life, with the convenience of being on a quiet street, and within walking distance to 17th Avenue's vibrant shops, restaurants, bars, and entertainment, as well as multiple parks, the river, bike pathways, and transit. This 900 square foot condominium has been carefully maintained with tasteful updates and is move in ready.

This southwest corner unit features a large balcony, floor-to-ceiling windows, and stunning views to the south with greenspace and parks at your doorstep. With an abundance of natural light and neutral colors, the open concept living area provides a welcoming retreat for entertaining or relaxing. The location is unbeatable, with Connaught Park right next door, and Kalamata and Galaxie diner just steps away.

The large master bedroom includes a beautiful ensuite bathroom and walk in closet. The second bedroom features a high-end wardrobe system. The spacious living area features a unique wood-burning fireplace, and the granite kitchen countertops provide a warm and welcome environment. Underground parkade and separate storage locker! Hamstead Estates offers a welcoming lobby with terrazzo tile, two elevators, and a sauna. This inner-city treasure is a must see and won't last long!



Built in 1979

Essential Information

| | |
|----------------|----------------|
| MLS® # | A2191142 |
| Price | \$369,000 |
| Bedrooms | 2 |
| Bathrooms | 2.00 |
| Full Baths | 1 |
| Half Baths | 1 |
| Square Footage | 902 |
| Acres | 0.00 |
| Year Built | 1979 |
| Type | Residential |
| Sub-Type | Apartment |
| Style | High-Rise (5+) |
| Status | Active |

Community Information

| | |
|-------------|------------------------|
| Address | 505, 1140 15 Avenue Sw |
| Subdivision | Beltline |
| City | Calgary |
| County | Calgary |
| Province | Alberta |
| Postal Code | T2R1K6 |

Amenities

| | |
|----------------|----------------------|
| Amenities | Elevator(s), Parking |
| Parking Spaces | 1 |
| Parking | Parkade |

Interior

| | |
|-------------------|--|
| Interior Features | Open Floorplan, Closet Organizers, Granite Counters, Walk-In Closet(s) |
| Appliances | Dishwasher, Dryer, Electric Stove, Refrigerator, Range Hood, Washer |
| Heating | Boiler, Natural Gas, Baseboard, Central |
| Cooling | None |
| Fireplace | Yes |
| # of Fireplaces | 1 |
| Fireplaces | Wood Burning, Living Room |
| # of Stories | 11 |

Exterior

| | |
|-------------------|-----------------|
| Exterior Features | Balcony |
| Construction | Brick, Concrete |

Additional Information

| | |
|----------------|--------------------|
| Date Listed | January 31st, 2025 |
| Days on Market | 94 |
| Zoning | CC-MHX |

Listing Details

| | |
|----------------|--------------------------------|
| Listing Office | Real Estate Professionals Inc. |
|----------------|--------------------------------|

Data is supplied by Pillar 9â„¢ MLS® System. Pillar 9â„¢ is the owner of the copyright in its MLS® System. Data is deemed reliable but is not guaranteed accurate by Pillar 9â„¢. The trademarks MLS®, Multiple Listing Service® and the associated logos are owned by The Canadian Real Estate Association (CREA) and identify the quality of services provided by real estate professionals who are members of CREA. Used under license.