

# \$1,462,000 - 243077 Range Road 255, Rural Wheatland County

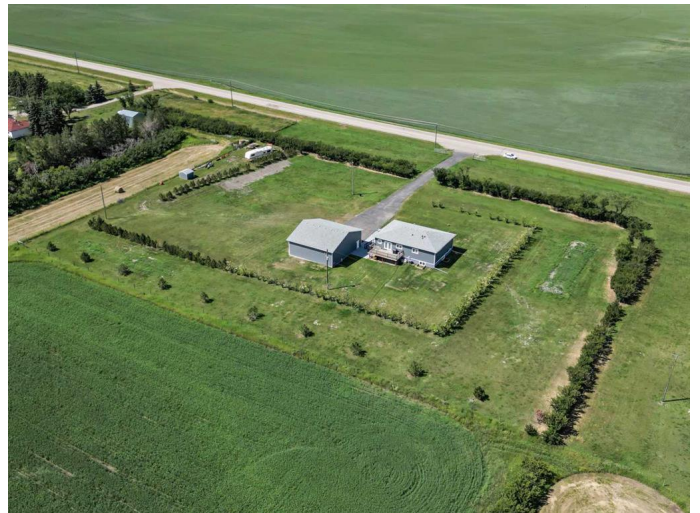
MLS® #A2192373

**\$1,462,000**

5 Bedroom, 3.00 Bathroom, 1,901 sqft  
Residential on 5.00 Acres

NONE, Rural Wheatland County, Alberta

**\*\*Welcome to your dream acreage just minutes from Strathmore!\*\*** Enjoy the perfect balance of country serenity and city convenience with quick access to all amenities and an easy commute to Calgary via Highway 1. Set on 5 acres with paved access and no gravel roads, this impressive property offers breathtaking west-facing mountain views on clear days. The spacious, air-conditioned bi-level home offers over 3,760 sq ft of developed living space, featuring five bedrooms (plus two potential) and three full bathrooms. The primary suite is a true retreat with a large walk-in closet and a beautifully appointed ensuite with dual vanities. Recent upgrades include hardwood floors and a custom gourmet kitchen with granite countertops, ample cabinetry, and a large island—ideal for entertaining. The bright dining and living areas are framed by west-facing windows that capture stunning sunsets. The fully developed basement boasts in-floor heating and includes a large family room, three additional bedrooms, a full bathroom, a laundry room, and a versatile flex/storage space. The home is equipped with triple-glazed windows, Hardie board siding, a Dura Deck, two sump pumps, a boiler, a forced air system, and in-floor heating throughout. Central air conditioning keeps the home comfortable year-round. Outside, the 45' x 40' heated shop is a showstopper. It includes



220V power, 12-foot and 18-foot doors, and space to accommodate up to nine vehicles, making it perfect for car enthusiasts, contractors, or hobbyists. This is more than just a home—it's a lifestyle. Schedule your private viewing with your favorite real estate professional today.

Built in 2019

**Essential Information**

MLS® #	A2192373
Price	\$1,462,000
Bedrooms	5
Bathrooms	3.00
Full Baths	3
Square Footage	1,901
Acres	5.00
Year Built	2019
Type	Residential
Sub-Type	Detached
Style	Acreage with Residence, Bi-Level
Status	Active

**Community Information**

Address	243077 Range Road 255
Subdivision	NONE
City	Rural Wheatland County
County	Wheatland County
Province	Alberta
Postal Code	T1P 0H9

**Amenities**

Parking Spaces	20
Parking	220 Volt Wiring, Driveway, Garage Door Opener, Heated Garage, Oversized, Quad or More Detached
# of Garages	9

## Interior

Interior Features	Breakfast Bar, Chandelier, Double Vanity, Granite Counters, Vinyl Windows, Kitchen Island, Open Floorplan, See Remarks, Recessed Lighting, Sump Pump(s), Walk-In Closet(s)
Appliances	Dishwasher, Gas Stove, Refrigerator, Range Hood
Heating	Boiler, Forced Air, In Floor, Natural Gas
Cooling	Central Air
Has Basement	Yes
Basement	Finished, Full

## Exterior

Exterior Features	BBQ gas line, Private Yard
Lot Description	Backs on to Park/Green Space, Back Yard, Corner Lot, Front Yard, Low Maintenance Landscape, Landscaped, Many Trees, No Neighbours Behind, Paved, See Remarks, Secluded, Views
Roof	Asphalt Shingle
Construction	See Remarks, Wood Frame
Foundation	Poured Concrete

## Additional Information

Date Listed	June 6th, 2025
Days on Market	46
Zoning	CR

## Listing Details

Listing Office	RE/MAX First
----------------	--------------

Data is supplied by Pillar 9â„¢ MLS® System. Pillar 9â„¢ is the owner of the copyright in its MLS® System. Data is deemed reliable but is not guaranteed accurate by Pillar 9â„¢. The trademarks MLS®, Multiple Listing Service® and the associated logos are owned by The Canadian Real Estate Association (CREA) and identify the quality of services provided by real estate professionals who are members of CREA. Used under license.