

\$789,000 - 88 Creekview Manor Sw, Calgary

MLS® #A2192622

\$789,000

5 Bedroom, 3.00 Bathroom, 2,309 sqft
Residential on 0.08 Acres

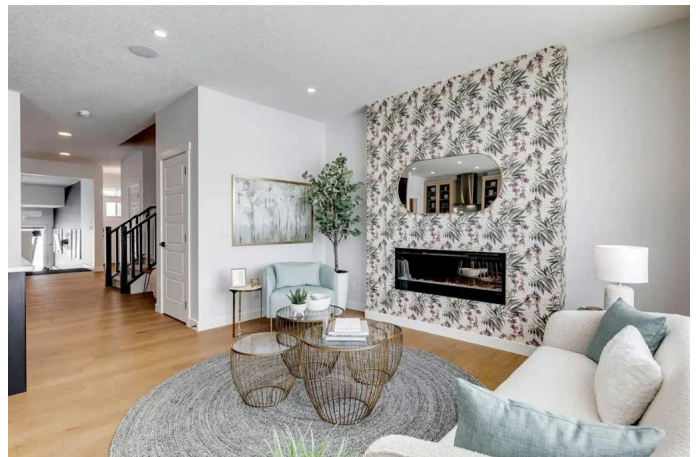
Pine Creek, Calgary, Alberta

Welcome to Calgary's new SW community of Creekview! Creekview sets out to be the perfect blend of city convenience and outdoor living: all surrounding communities are well developed, meaning amenities are only a short drive away, but you have the opportunity to come back to a neighborhood that offers a tranquil, laid-back lifestyle. There will be 4 parks within Creekview, as well as winding unpaved walking paths along the edge of the community. The Concord model that we have available is an excellent choice for big families: this home is 2,310 sq ft with 5 bedrooms with 3 full washrooms. There are 4 Bedrooms and a Bonus Room upstairs, as well as a Main Floor Bedroom for grandparents or guests to stay in. To top it off, this home also features an undeveloped walkout basement! With a rear deck to enjoy the views, and larger basement windows letting in more light, this home truly is the whole package. Photos are representative.

Built in 2025

Essential Information

MLS® #	A2192622
Price	\$789,000
Bedrooms	5
Bathrooms	3.00
Full Baths	3
Square Footage	2,309
Acres	0.08



Year Built	2025
Type	Residential
Sub-Type	Detached
Style	2 Storey
Status	Active

Community Information

Address	88 Creekview Manor Sw
Subdivision	Pine Creek
City	Calgary
County	Calgary
Province	Alberta
Postal Code	T2X5Y1

Amenities

Parking Spaces	4
Parking	Double Garage Attached
# of Garages	2

Interior

Interior Features	Double Vanity, Kitchen Island, No Animal Home, No Smoking Home, Open Floorplan, Pantry, Soaking Tub, Walk-In Closet(s), Stone Counters
Appliances	Dishwasher, Microwave, Refrigerator, Range
Heating	Forced Air
Cooling	None
Fireplace	Yes
# of Fireplaces	1
Fireplaces	Decorative, Electric
Has Basement	Yes
Basement	Full, Unfinished, Walk-Out

Exterior

Exterior Features	None
Lot Description	Back Yard, Zero Lot Line
Roof	Asphalt Shingle
Construction	Stone, Vinyl Siding, Wood Frame
Foundation	Poured Concrete

Additional Information

Date Listed	February 6th, 2025
Days on Market	86
Zoning	R-G

Listing Details

Listing Office	Bode Platform Inc.
----------------	--------------------

Data is supplied by Pillar 9â„¢ MLSÂ® System. Pillar 9â„¢ is the owner of the copyright in its MLSÂ® System. Data is deemed reliable but is not guaranteed accurate by Pillar 9â„¢. The trademarks MLSÂ®, Multiple Listing ServiceÂ® and the associated logos are owned by The Canadian Real Estate Association (CREA) and identify the quality of services provided by real estate professionals who are members of CREA. Used under license.