

\$1,199,900 - 127 Saddlepeace Manor Ne, Calgary

MLS® #A2200578

\$1,199,900

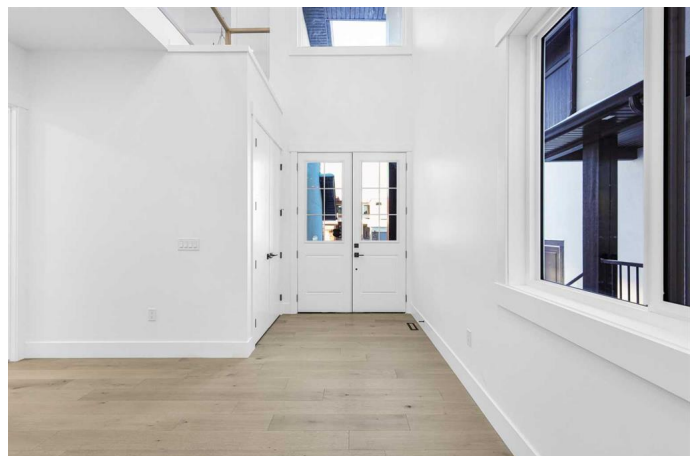
7 Bedroom, 6.00 Bathroom, 3,125 sqft

Residential on 0.10 Acres

Saddle Ridge, Calgary, Alberta

DON'T MISS THIS INCREDIBLE OPPORTUNITY TO OWN A LUXURIOUS MANSION WITH MULTIPLE MORTGAGE HELPERS - INCLUDING 2 Basements!

Located in Saddle Ridge near Gobind Sarvar Private School, this stunning property offers over 4200 SQ FT OF LIVING SPACE with 8 BEDROOMS & 6 FULL BATHS. The main floor welcomes you with a grand foyer featuring HIGH CEILINGS, leading to a LIVING ROOM, FAMILY ROOM, DINING AREA, and a KITCHEN equipped with new stainless steel appliances, QUARTZ COUNTERTOPS, and a SPICE KITCHEN. A MAIN FLOOR BEDROOM & FULL BATHROOM make this home ideal for families with elderly members or multi-generational living. The upper level features 4 BEDROOMS AND 3 FULL BATHROOMS, including 2 MASTER SUITES WITH ENSUITES & WALK-IN CLOSETS. The GRAND MASTER boasts TRAY CEILINGS and a 5-PC ENSUITE, while the secondary master showcases a FEATURE WALL, VAULTED CEILINGS, and a 4-PC ENSUITE. A BONUS ROOM and UPPER FLOOR LAUNDRY add to the convenience. The WALK-UP BASEMENT is a key highlight, offering 2 Basements: a 2-BEDROOM LEGAL SUITE and a owners suite, each with its own kitchen, living area, and full bath, providing excellent rental income potential. Additional features include FEATURE WALLS, HIGH CEILINGS, AND VAULTED CEILINGS throughout. This



BRAND NEW HOME is situated in a prime location with easy access to Metis Trail NE, 80 Ave NE, and 88 Ave NE. AN UNMATCHED VALUE IN A FANTASTIC NEIGHBORHOOD! Select images have been altered.

Built in 2024

Essential Information

| | |
|----------------|-------------|
| MLS® # | A2200578 |
| Price | \$1,199,900 |
| Bedrooms | 7 |
| Bathrooms | 6.00 |
| Full Baths | 6 |
| Square Footage | 3,125 |
| Acres | 0.10 |
| Year Built | 2024 |
| Type | Residential |
| Sub-Type | Detached |
| Style | 2 Storey |
| Status | Active |

Community Information

| | |
|-------------|--------------------------|
| Address | 127 Saddlepeace Manor Ne |
| Subdivision | Saddle Ridge |
| City | Calgary |
| County | Calgary |
| Province | Alberta |
| Postal Code | T3J 2H9 |

Amenities

| | |
|----------------|------------------------|
| Parking Spaces | 4 |
| Parking | Double Garage Attached |
| # of Garages | 2 |

Interior

| | |
|-------------------|--|
| Interior Features | Chandelier, High Ceilings, Kitchen Island, Open Floorplan, Vinyl Windows |
| Appliances | Built-In Oven, Dishwasher, Electric Range, Gas Cooktop, Refrigerator, |

| | |
|-----------------|---------------------------------------|
| | Washer/Dryer |
| Heating | Standard |
| Cooling | None |
| Fireplace | Yes |
| # of Fireplaces | 1 |
| Fireplaces | Electric |
| Has Basement | Yes |
| Basement | Exterior Entry, Finished, Full, Suite |

Exterior

| | |
|-------------------|---|
| Exterior Features | None |
| Lot Description | Level, City Lot, Interior Lot |
| Roof | Asphalt Shingle |
| Construction | Concrete, Stone, Vinyl Siding, Wood Frame |
| Foundation | Poured Concrete |

Additional Information

| | |
|----------------|-----------------|
| Date Listed | March 8th, 2025 |
| Days on Market | 54 |
| Zoning | R-G |

Listing Details

| | |
|----------------|-----------------|
| Listing Office | URBAN-REALTY.ca |
|----------------|-----------------|

Data is supplied by Pillar 9â„¢ MLSÂ® System. Pillar 9â„¢ is the owner of the copyright in its MLSÂ® System. Data is deemed reliable but is not guaranteed accurate by Pillar 9â„¢. The trademarks MLSÂ®, Multiple Listing ServiceÂ® and the associated logos are owned by The Canadian Real Estate Association (CREA) and identify the quality of services provided by real estate professionals who are members of CREA. Used under license.