

# \$195,000 - 9516 106 Ave, Grande Prairie

MLS® #A2207096

## \$195,000

2 Bedroom, 1.00 Bathroom, 895 sqft

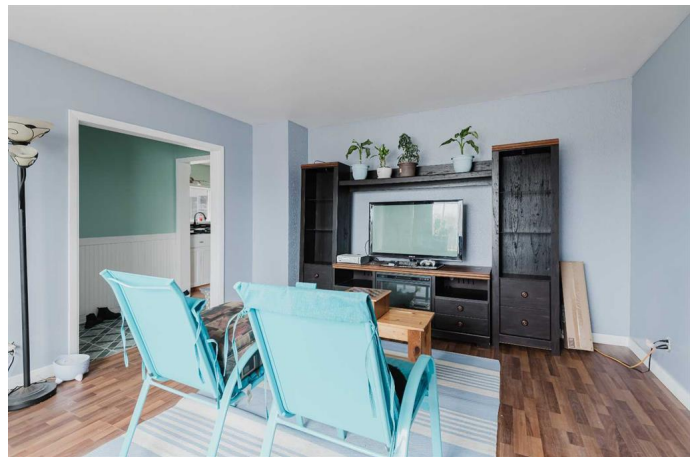
Residential on 0.14 Acres

Hillside., Grande Prairie, Alberta

Ideal for first-time homebuyers or retirees, this charming property features two bedrooms and one bathroom within nearly 1,000 square feet of living space. Abundant natural light flows through numerous windows, highlighting the stone countertops and contemporary white cabinetry. Situated on a spacious lot along the parade route, the property is located on a generous 5,556-square-foot lot.

The roof shingles are just over ten years old, while the furnace and hot water tank were updated in 2022. The stainless steel refrigerator was acquired in 2023, and the washer and dryer were purchased in 2021. The inviting large living room promotes relaxation and is complemented by a delightful front deck, as well as a newly renovated expansive back deck adorned with various perennials. All the necessary improvements have been thoughtfully completed for you. The backyard showcases a well-designed garden area, featuring an array of rocks and stepping stones, along with trellises adorned with blooming flowers. Wooden garden beds are planted with two varieties of chives, dill, and potentially some tomatoes. Additionally, the garden includes strawberries, blueberries, gooseberries, raspberries, rhubarb, and Japanese sour cherry trees, providing a delightful selection of fresh fruit throughout the season.

Built in 1954



## Essential Information

|                |             |
|----------------|-------------|
| MLS® #         | A2207096    |
| Price          | \$195,000   |
| Bedrooms       | 2           |
| Bathrooms      | 1.00        |
| Full Baths     | 1           |
| Square Footage | 895         |
| Acres          | 0.14        |
| Year Built     | 1954        |
| Type           | Residential |
| Sub-Type       | Detached    |
| Style          | Bungalow    |
| Status         | Active      |

## Community Information

|             |                |
|-------------|----------------|
| Address     | 9516 106 Ave   |
| Subdivision | Hillside.      |
| City        | Grande Prairie |
| County      | Grande Prairie |
| Province    | Alberta        |
| Postal Code | T8V 1J1        |

## Amenities

|                |                         |
|----------------|-------------------------|
| Parking Spaces | 4                       |
| Parking        | Off Street, Parking Pad |

## Interior

|                   |   |
|-------------------|---|
| Interior Features | Ceiling Fan(s), French Door, Granite Counters, Vinyl Windows    |
| Appliances        | Dishwasher, Electric Stove, Freezer, Refrigerator, Washer/Dryer |
| Heating           | Forced Air  |
| Cooling           | None  |
| Has Basement      | Yes   |
| Basement          | Partial, Unfinished   |

## Exterior

|                   |   |
|-------------------|---|
| Exterior Features | Garden  |
| Lot Description   | Back Lane, City Lot, Corner Lot, Fruit Trees/Shrub(s), Landscaped, Low Maintenance Landscape, Rectangular Lot |
| Roof              | Asphalt Shingle   |

|              |                 |
|--------------|-----------------|
| Construction | Vinyl Siding    |
| Foundation   | Poured Concrete |

**Additional Information**

|                |                 |
|----------------|-----------------|
| Date Listed    | April 1st, 2025 |
| Days on Market | 37              |
| Zoning         | RT              |

**Listing Details**

|                |                              |
|----------------|------------------------------|
| Listing Office | Grassroots Realty Group Ltd. |
|----------------|------------------------------|

Data is supplied by Pillar 9â„¢ MLS® System. Pillar 9â„¢ is the owner of the copyright in its MLS® System. Data is deemed reliable but is not guaranteed accurate by Pillar 9â„¢. The trademarks MLS®, Multiple Listing Service® and the associated logos are owned by The Canadian Real Estate Association (CREA) and identify the quality of services provided by real estate professionals who are members of CREA. Used under license.