

\$399,900 - 6818 41 Street, Lloydminster

MLS® #A2208822

\$399,900

5 Bedroom, 3.00 Bathroom, 1,248 sqft
Residential on 0.13 Acres

Parkview Estates, Lloydminster, Alberta

Corner lot in a quiet area of Parkview features lots of alder cabinets plus corner pantry, large island with space for seating. Door off dining area to rear deck. Living room features cherry hardwood flooring. Basement has large open family room, 3 pc bathroom, one finished bedroom, den and one unfinished bedroom. In a great location this home is a really a good choice.

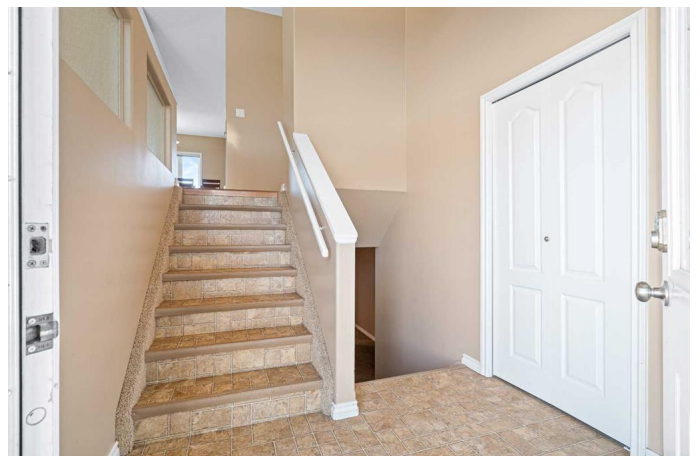
Built in 2006

Essential Information

MLS® #	A2208822
Price	\$399,900
Bedrooms	5
Bathrooms	3.00
Full Baths	3
Square Footage	1,248
Acres	0.13
Year Built	2006
Type	Residential
Sub-Type	Detached
Style	Bi-Level
Status	Active

Community Information

Address	6818 41 Street
Subdivision	Parkview Estates
City	Lloydminster



County	Lloydminster
Province	Alberta
Postal Code	T9V 2B3

Amenities

Parking Spaces	4
Parking	Concrete Driveway, Double Garage Attached, Heated Garage, Insulated, Parking Pad
# of Garages	2

Interior

Interior Features	Kitchen Island, Pantry
Appliances	Garage Control(s), Microwave, Microwave Hood Fan, Refrigerator, Stove(s), Washer/Dryer, Window Coverings
Heating	Forced Air, Natural Gas
Cooling	None
Has Basement	Yes
Basement	Finished, Full

Exterior

Exterior Features	Private Yard
Lot Description	Corner Lot, Lawn, Irregular Lot
Roof	Asphalt Shingle
Construction	Stone, Vinyl Siding, Wood Frame
Foundation	Wood

Additional Information

Date Listed	April 4th, 2025
Days on Market	36
Zoning	R1

Listing Details

Listing Office	MUSGRAVE AGENCIES
----------------	-------------------

Data is supplied by Pillar 9â„¢ MLS® System. Pillar 9â„¢ is the owner of the copyright in its MLS® System. Data is deemed reliable but is not guaranteed accurate by Pillar 9â„¢. The trademarks MLS®, Multiple Listing Service® and the associated logos are owned by The Canadian Real Estate Association (CREA) and identify the quality of services provided by real estate professionals who are members of CREA. Used under license.