

\$275,000 - 5016 56 Street, Glendon

MLS® #A2209380

\$275,000

4 Bedroom, 3.00 Bathroom, 1,274 sqft

Residential on 0.34 Acres

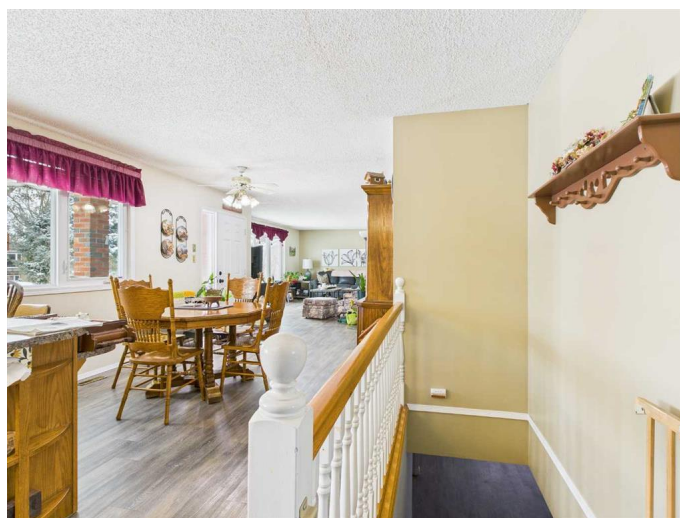
NONE, Glendon, Alberta

Visit REALTOR® website for additional information. Charming Family Home in Glendon, AB â€“ Spacious & Updated. Welcome to this well-maintained, beautifully updated home â€” perfect for families, first-time buyers, or anyone looking for a peaceful property with room to grow. Upstairs, youâ€™ll find a bright and spacious layout featuring three bedrooms, 1.5 bathrooms, and a large living room filled with natural light. The open-concept kitchen and dining area is ideal for entertaining, while the convenient main floor laundry adds everyday ease. The home has been updated with new vinyl flooring throughout both levels, offering a modern touch and easy upkeep. The fully finished basement boasts an additional bedroom with a walk-in closet, a full bathroom, a massive rec room, and a generous utility/storage room. Enjoy the outdoors with a screened-in patio featuring a gas hookup for BBQing, plus a large front and back yard with mature trees â€” including fruit-producing varieties!

Built in 1979

Essential Information

MLS® #	A2209380
Price	\$275,000
Bedrooms	4
Bathrooms	3.00



Full Baths	2
Half Baths	1
Square Footage	1,274
Acres	0.34
Year Built	1979
Type	Residential
Sub-Type	Detached
Style	Bungalow
Status	Active

Community Information

Address	5016 56 Street
Subdivision	NONE
City	Glendon
County	Bonnyville No. 87, M.D. of
Province	Alberta
Postal Code	T0A 1P0

Amenities

Parking Spaces	6
Parking	Single Garage Attached
# of Garages	1

Interior

Interior Features	Closet Organizers, Double Vanity, Laminate Counters, No Smoking Home, Storage, Suspended Ceiling
Appliances	Dishwasher, Dryer, Electric Stove, Range Hood, Refrigerator, Washer, Water Softener
Heating	Forced Air
Cooling	None
Fireplaces	None
Has Basement	Yes
Basement	Finished, Full

Exterior

Exterior Features	Garden, Storage
Lot Description	Back Yard, City Lot, Front Yard, Lawn, Low Maintenance Landscape, Many Trees, Rectangular Lot, Square Shaped Lot, Street Lighting
Roof	Asphalt Shingle

Construction	Concrete, Wood Frame
Foundation	Poured Concrete

Additional Information

Date Listed	April 7th, 2025
Days on Market	130
Zoning	R2

Listing Details

Listing Office	PG Direct Realty Ltd.
----------------	-----------------------

Data is supplied by Pillar 9â„¢ MLS® System. Pillar 9â„¢ is the owner of the copyright in its MLS® System. Data is deemed reliable but is not guaranteed accurate by Pillar 9â„¢. The trademarks MLS®, Multiple Listing Service® and the associated logos are owned by The Canadian Real Estate Association (CREA) and identify the quality of services provided by real estate professionals who are members of CREA. Used under license.