

\$260,000 - Sw-16-83-2-w6, Rural Clear Hills County

MLS® #A2210121

\$260,000

0 Bedroom, 0.00 Bathroom,
Land on 161.00 Acres

NONE, Rural Clear Hills County, Alberta

161 acres of farmland! Property has been logged recently so it is ready for clearing for farmland or put your cattle in for grazing! Quarter has been fenced but needs some repair and up grades! There is a small seasonal water run that would provide water for livestock! Great location for the out door person to put your recreational cabin with lots of wildlife in the area! There will be lots of new re-growth for animals to feed on in the next few years so great for hunting!



Essential Information

| | |
|-----------|-----------------|
| MLS® # | A2210121 |
| Price | \$260,000 |
| Bathrooms | 0.00 |
| Acres | 161.00 |
| Type | Land |
| Sub-Type | Commercial Land |
| Status | Active |

Community Information

| | |
|-------------|--------------------------|
| Address | Sw-16-83-2-w6 |
| Subdivision | NONE |
| City | Rural Clear Hills County |
| County | Clear Hills County |
| Province | Alberta |
| Postal Code | T0H2A0 |

Additional Information

Date Listed

April 8th, 2025

Days on Market

28

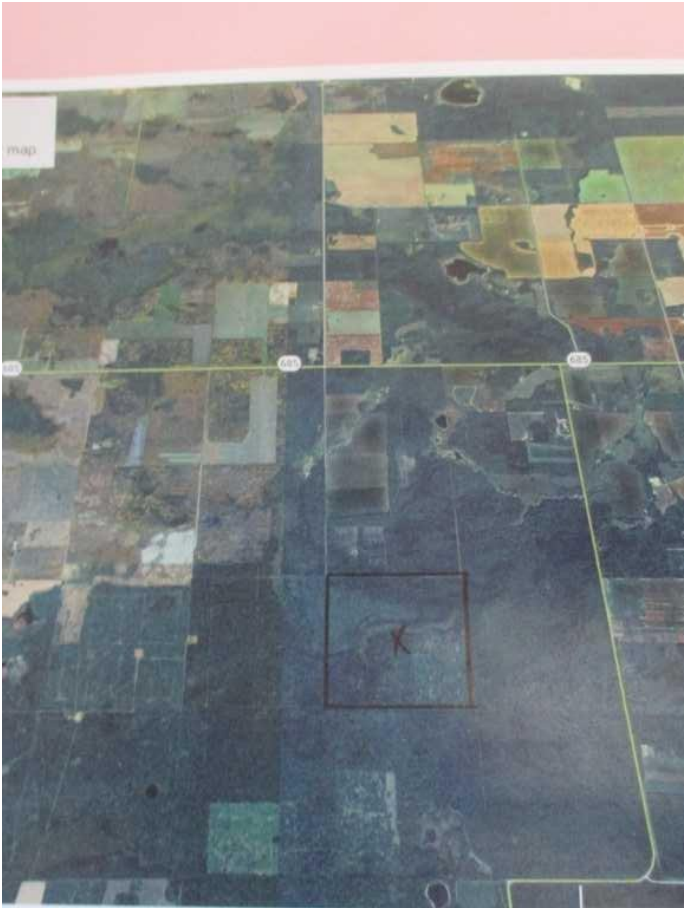
Zoning

AG

Listing Details

Listing Office

RE/MAX Grande Prairie



Data is supplied by Pillar 9â„¢ MLSÂ® System. Pillar 9â„¢ is the owner of the copyright in its MLSÂ® System. Data is deemed reliable but is not guaranteed accurate by Pillar 9â„¢. The trademarks MLSÂ®, Multiple Listing ServiceÂ® and the associated logos are owned by The Canadian Real Estate Association (CREA) and identify the quality of services provided by real estate professionals who are members of CREA. Used under license.

