

\$369,900 - 8911 62 Avenue, Grande Prairie

MLS® #A2213351

\$369,900

4 Bedroom, 4.00 Bathroom, 1,329 sqft

Residential on 0.09 Acres

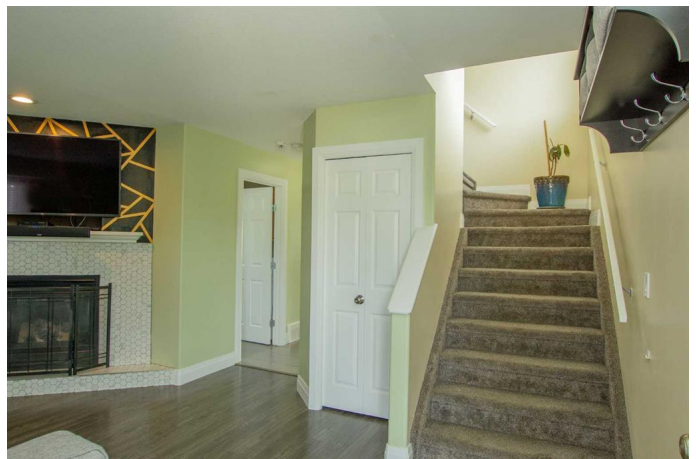
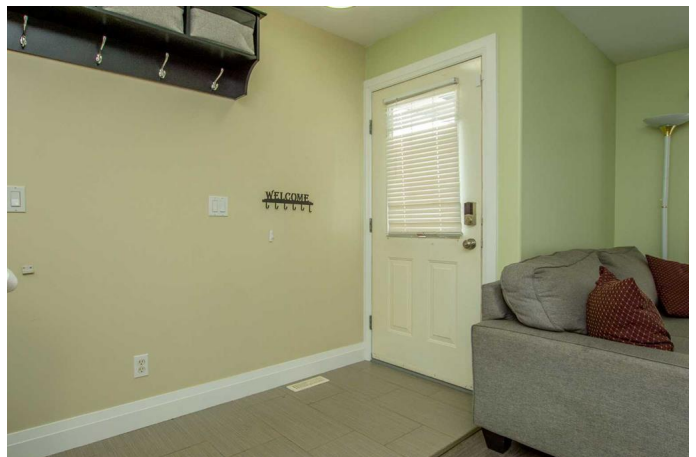
Countryside South., Grande Prairie, Alberta

A true jaw-dropping fully developed 4 BED 3.5 BATH HOME! Prepared to be WOWED with this property and at an affordable price. It would be hard to place your finger on a portion of this home that hasn't been updated from the original state. To start off, you will not find a kitchen of this caliber in this price range. Everything from high-end finishing's including back splash, counter tops throughout the kitchen and all the bathrooms, cabinets have been repainted. Main floor showcases an open concept living area with a spacious tile entrance, main floor laundry + half bath, and living room is complimented by gas fireplace. Upstairs hosts full bath, 2 bedrooms, and master with walk in closet with huge tiled shower. Basement is fully developed with 4th bedroom, full bathroom with tiled shower family room, storage and utility room. Back yard is SOUTH BACKING spreading natural light all day long it also boasts generous sized private deck, fenced yard, and detached garage. Driveway is large and in charge allowing for RV Parking!

Built in 2002

Essential Information

MLS® #	A2213351
Price	\$369,900
Bedrooms	4
Bathrooms	4.00



Full Baths	3
Half Baths	1
Square Footage	1,329
Acres	0.09
Year Built	2002
Type	Residential
Sub-Type	Detached
Style	2 Storey
Status	Active

Community Information

Address	8911 62 Avenue
Subdivision	Countryside South.
City	Grande Prairie
County	Grande Prairie
Province	Alberta
Postal Code	T8W 2P4

Amenities

Parking Spaces	6
Parking	Single Garage Detached
# of Garages	1

Interior

Interior Features	Ceiling Fan(s), No Smoking Home, Pantry, See Remarks, Storage
Appliances	Dishwasher, Dryer, Electric Stove, Microwave, Refrigerator, Washer
Heating	Forced Air, Natural Gas
Cooling	None
Fireplace	Yes
# of Fireplaces	1
Fireplaces	Gas
Has Basement	Yes
Basement	Finished, Full

Exterior

Exterior Features	Other, Storage
Lot Description	Back Lane, Back Yard, Front Yard, Landscaped, Lawn
Roof	Asphalt Shingle
Construction	Mixed

Foundation	Poured Concrete
------------	-----------------

Additional Information

Date Listed	April 21st, 2025
-------------	------------------

Days on Market	14
----------------	----

Zoning	RS
--------	----

Listing Details

Listing Office	RE/MAX Grande Prairie
----------------	-----------------------

Data is supplied by Pillar 9â„¸ MLSÂ® System. Pillar 9â„¸ is the owner of the copyright in its MLSÂ® System. Data is deemed reliable but is not guaranteed accurate by Pillar 9â„¸. The trademarks MLSÂ®, Multiple Listing ServiceÂ® and the associated logos are owned by The Canadian Real Estate Association (CREA) and identify the quality of services provided by real estate professionals who are members of CREA. Used under license.