

\$449,900 - 20, 2815 Palliser Drive Sw, Calgary

MLS® #A2216912

\$449,900

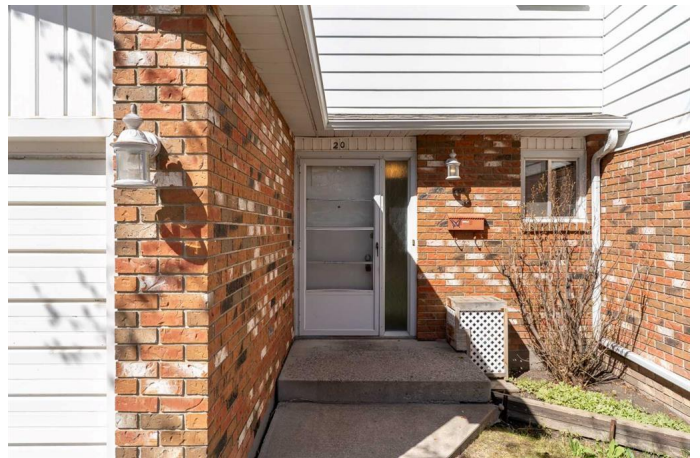
3 Bedroom, 2.00 Bathroom, 1,244 sqft
Residential on 0.00 Acres

Oakridge, Calgary, Alberta

OPEN HOUSE SATURDAY MAY 3, 12â€“3PM. Hereâ€™s your opportunity to own a spacious 3-bedroom townhome with an attached garage, private west-facing yard, and low condo feesâ€”all in one of Calgaryâ€™s most established and family-friendly communities. Set within the quiet, well-managed Oak Hampton Court complex, this home offers a smart, functional layout with plenty of room to grow. Whether youâ€™re a first-time buyer, investor, or looking to settle into a fantastic neighborhood, this property combines immediate comfort with tremendous potential to personalize and add value over time.

The main level includes a generous front entry, powder room, and rare direct access to the garage. The west-facing living room overlooks the fully fenced, low-maintenance backyardâ€”sheltered by mature trees for a private, outdoor retreat. The kitchen features ample counter and cabinet space and opens into a dining area with direct access to the yardâ€”ideal for everyday living and entertaining.

Upstairs, youâ€™ll find three well-sized bedrooms with beautifully preserved hardwood floors. A bright and functional 4-piece bath completes the upper level. The partially finished basement adds versatility, perfect for a home office, rec room, or creative space, with plenty of storage.



Oakridge is cherished for its mature landscape, extensive pathway system, and access to nature. Youâ€™re minutes from Glenmore Reservoir, Southland Leisure Centre, Costco, grocery stores, top-rated schools, and the Ring Road for easy commuting.

Townhomes offering this blend of space, value, and location are a rare findâ€™donâ€™t miss your chance.

Built in 1970

Essential Information

| | |
|----------------|---------------|
| MLS® # | A2216912 |
| Price | \$449,900 |
| Bedrooms | 3 |
| Bathrooms | 2.00 |
| Full Baths | 1 |
| Half Baths | 1 |
| Square Footage | 1,244 |
| Acres | 0.00 |
| Year Built | 1970 |
| Type | Residential |
| Sub-Type | Row/Townhouse |
| Style | 2 Storey |
| Status | Active |

Community Information

| | |
|-------------|----------------------------|
| Address | 20, 2815 Palliser Drive Sw |
| Subdivision | Oakridge |
| City | Calgary |
| County | Calgary |
| Province | Alberta |
| Postal Code | T2V4B2 |

Amenities

| | |
|-----------|------------------------------|
| Amenities | Parking, Snow Removal, Trash |
|-----------|------------------------------|

| | |
|----------------|------------------------|
| Parking Spaces | 2 |
| Parking | Single Garage Attached |
| # of Garages | 1 |

Interior

| | |
|-------------------|---|
| Interior Features | Ceiling Fan(s), No Animal Home, No Smoking Home, Storage |
| Appliances | Dishwasher, Dryer, Electric Stove, Garage Control(s), Microwave, Refrigerator, Washer |
| Heating | Forced Air |
| Cooling | None |
| Has Basement | Yes |
| Basement | Full, Partially Finished |

Exterior

| | |
|-------------------|---|
| Exterior Features | Private Yard |
| Lot Description | Back Yard, Low Maintenance Landscape, Treed |
| Roof | Asphalt Shingle |
| Construction | Aluminum Siding, Brick, Wood Frame |
| Foundation | Poured Concrete |

Additional Information

| | |
|----------------|---------------|
| Date Listed | May 2nd, 2025 |
| Days on Market | 1 |
| Zoning | M-CG |

Listing Details

| | |
|----------------|----------------------------------|
| Listing Office | Royal LePage Mission Real Estate |
|----------------|----------------------------------|

Data is supplied by Pillar 9â„¢ MLS® System. Pillar 9â„¢ is the owner of the copyright in its MLS® System. Data is deemed reliable but is not guaranteed accurate by Pillar 9â„¢. The trademarks MLS®, Multiple Listing Service® and the associated logos are owned by The Canadian Real Estate Association (CREA) and identify the quality of services provided by real estate professionals who are members of CREA. Used under license.