

# \$955,000 - 217 Falcon Ridge Way, Rural Lethbridge County

---

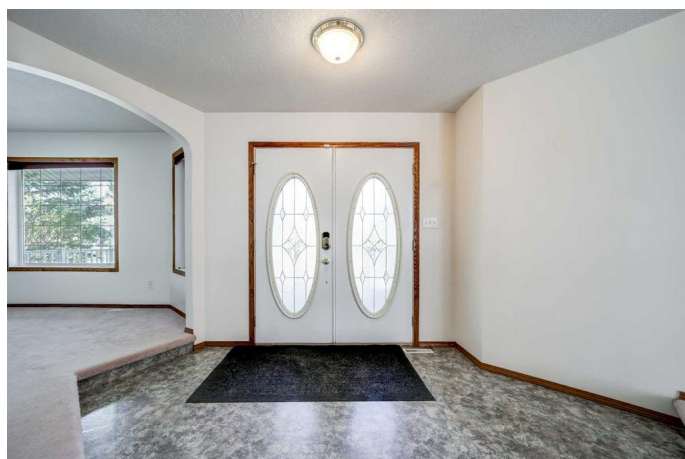
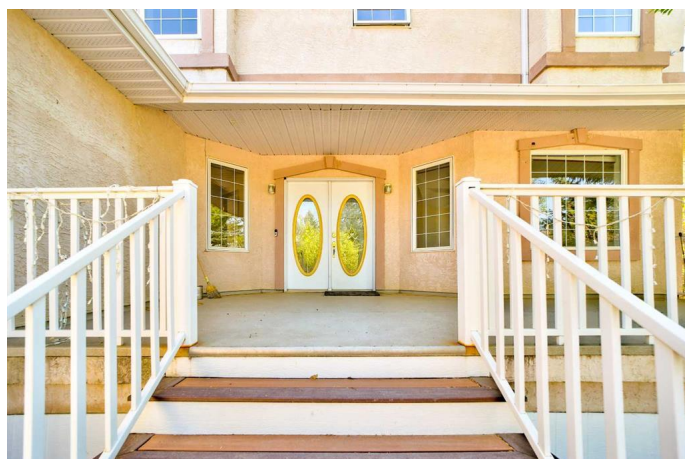
MLS® #A2219297

**\$955,000**

6 Bedroom, 4.00 Bathroom, 4,270 sqft  
Residential on 1.03 Acres

N/A, Rural Lethbridge County, Alberta

Welcome to 217 Falcon Ridge Way—an exceptional country residential property located in Mountain Meadow. Situated on 1.03 acres, this spacious 1.5-storey home offers over 5,600 sq. ft. of total living space, coulee views, and close proximity to the city. Inside, you’ll find 6 bedrooms, 3.5 bathrooms, with an attached, heated, triple garage. The massive kitchen is a dream for home chefs, featuring 19 cupboards, 19 drawers, a walk-in pantry, and direct access to a huge deck overlooking the scenic coulee—with a gas line ready for your BBQ. The main floor family room boasts vaulted ceilings and large windows allow in plenty of natural light. Additional main level features include a formal dining room, dedicated office, and a full laundry room with sink. Next follow the spiral staircase to the top floor is where you'll find the primary suite. A private and spacious retreat. Wake up to peaceful views and step out onto your Juliette balcony. The ensuite a jetted tub perfect for unwinding at the end of the day. A bonus room above the garage spanning the entire width of the garage!!—ideal for a playroom, home theatre, or studio. The main 5-piece bathroom is thoughtfully designed for busy households, featuring a separated vanity area with sink outside the main bath space—ideal for multitasking on busy mornings! The fully developed basement adds even more functional living space, featuring



the 6th bedroomâ€”ideal for guests or teens..  
A 3-piece bathroom adds convenience, while a dedicated food storage room offers practical space for canning, bulk goods, or pantry overflow. The highlight is the huge recreation room, perfect for a home theatre, games area, or entertaining space. With a walk-up basement entrance, there's easy access to the outdoors. This home is built with durability and long-term value in mind. The basement is constructed with ICF (Insulated Concrete Form) blocks, offering superior insulation, energy efficiency, and structural strength. In 2023, a new roof was installed with 50-year shingles, providing peace of mind for decades to come. This well-constructed home offers an incredible canvas for your vision. With generous square footage, a thoughtful layout, and solid bones, itâ€™s the perfect opportunity to renovate, refresh, and create the dream acreage youâ€™ve always imagined!  
Book your showing with your REALTORÂ® todayâ€”acreage properties like this donâ€™t come along often!

Built in 1996

**Essential Information**

MLS® #	A2219297
Price	\$955,000
Bedrooms	6
Bathrooms	4.00
Full Baths	3
Half Baths	1
Square Footage	4,270
Acres	1.03
Year Built	1996
Type	Residential
Sub-Type	Detached
Style	Acreage with Residence, 1 and Half Storey

Status Active

## Community Information

Address 217 Falcon Ridge Way  
Subdivision N/A  
City Rural Lethbridge County  
County Lethbridge County  
Province Alberta  
Postal Code T1J 5R8

## Amenities

Utilities Cable Available  
Parking Spaces 6  
Parking Additional Parking, Asphalt, Driveway, Heated Garage, Insulated, Off Street, Parking Pad, RV Access/Parking, Triple Garage Attached  
# of Garages 3

## Interior

Interior Features Chandelier, Closet Organizers, Central Vacuum, Double Vanity, High Ceilings, Vinyl Windows, Jetted Tub, Kitchen Island, Pantry, See Remarks, Recessed Lighting, Storage, Sump Pump(s), Vaulted Ceiling(s), Walk-In Closet(s)  
Appliances Central Air Conditioner, Dishwasher, Garage Control(s), Microwave Hood Fan, Refrigerator, Stove(s), Washer/Dryer  
Heating Fan Coil, Forced Air, Fireplace(s), Natural Gas  
Cooling Central Air  
Fireplace Yes  
# of Fireplaces 1  
Fireplaces Gas  
Has Basement Yes  
Basement Finished, Full, Walk-Up To Grade

## Exterior

Exterior Features Balcony, BBQ gas line  
Lot Description Back Yard, Front Yard, Landscaped, No Neighbours Behind, See Remarks, Underground Sprinklers  
Roof Asphalt Shingle  
Construction Concrete, ICFs (Insulated Concrete Forms), Stucco, Wood Frame  
Foundation ICF Block

## Additional Information

Date Listed	May 7th, 2025
Days on Market	58
Zoning	GCR

## **Listing Details**

Listing Office	Royal LePage South Country - Lethbridge
----------------	---

Data is supplied by Pillar 9â„¢ MLS® System. Pillar 9â„¢ is the owner of the copyright in its MLS® System. Data is deemed reliable but is not guaranteed accurate by Pillar 9â„¢. The trademarks MLS®, Multiple Listing Service® and the associated logos are owned by The Canadian Real Estate Association (CREA) and identify the quality of services provided by real estate professionals who are members of CREA. Used under license.