

\$549,900 - 39 Riverdale Bend, Whitecourt

MLS® #A2221289

\$549,900

3 Bedroom, 2.00 Bathroom, 1,429 sqft
Residential on 0.18 Acres

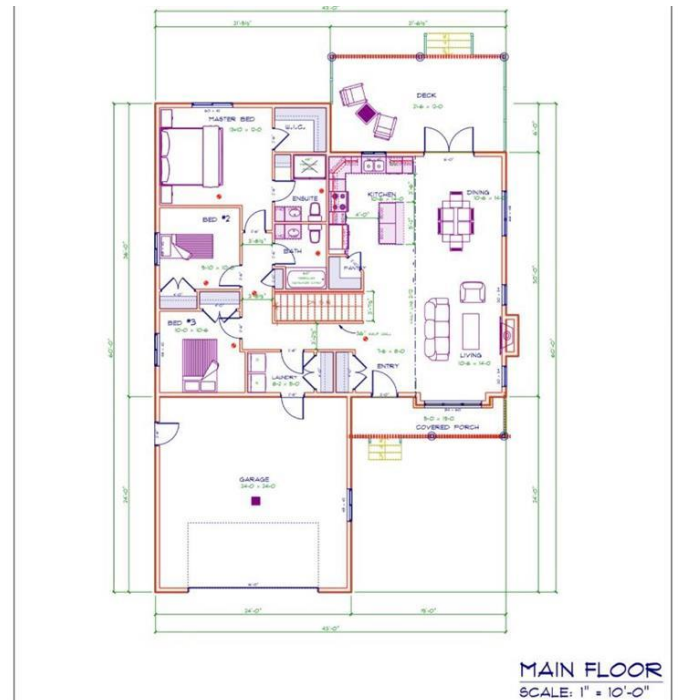
NONE, Whitecourt, Alberta

Welcome to your dream home in Whitecourt's™ newest subdivision, perfectly positioned between St. Joseph School & Percy Baxter School. This stunning brand new built home combines contemporary design with thoughtful upgrades, creating the ideal family-friendly residence that reflects the latest trends.

The attention to detail is evident starting outside with the black windows jambs, and decorative timbers. The bright, airy ambiance is crafted through carefully selected finishes, including beautiful vinyl plank flooring and a striking fireplace that anchors the living space. The white oak island, accented with luxurious quartz countertops and subtle hints of gold in the kitchen and en suite, add custom touches that bring warmth and sophistication to your daily life.

Designed for convenience and comfort, the main floor features a handy laundry area, while the 24x24 garage is equipped with efficient LED lighting, making chores and projects a breeze. Boasting over 1,400 sq ft above grade, this home offers a spacious, family-friendly open floor plan complemented by a wide-open basement—framed for two bedrooms, with a rough-in for a bathroom and wet bar, providing a pristine blank canvas to customize your dream basement space.

The exterior showcases a desirable corner lot



Kitchen Perspective



with fencing on three sides, ample backyard space, and convenient RV PARKING. A sleek, covered deck awaits your flower pots and patio furniture, perfect for outdoor gatherings or relaxing evenings.

Enjoy all the amenities Whitecourt has to offer just a short walk away—baseball diamonds, golf course, and Athabasca river trails. This modern bungalow combines style, functionality, and charm, making it the perfect place for your family to call home.

Built in 2025

Essential Information

MLS® #	A2221289
Price	\$549,900
Bedrooms	3
Bathrooms	2.00
Full Baths	2
Square Footage	1,429
Acres	0.18
Year Built	2025
Type	Residential
Sub-Type	Detached
Style	Bungalow
Status	Active

Community Information

Address	39 Riverdale Bend
Subdivision	NONE
City	Whitecourt
County	Woodlands County
Province	Alberta
Postal Code	T7S 0G4

Amenities

Parking Spaces	2
Parking	Double Garage Attached

# of Garages	2
--------------	---

Interior

Interior Features	Kitchen Island
Appliances	None
Heating	Forced Air
Cooling	None
Fireplace	Yes
# of Fireplaces	1
Fireplaces	Gas
Has Basement	Yes
Basement	Full, Unfinished

Exterior

Exterior Features	None
Lot Description	Corner Lot
Roof	Asphalt Shingle
Construction	Vinyl Siding
Foundation	Poured Concrete

Additional Information

Date Listed	May 21st, 2025
Days on Market	119
Zoning	R-1C

Listing Details

Listing Office	RE/MAX ADVANTAGE (WHITECOURT)
----------------	-------------------------------

Data is supplied by Pillar 9â„¢ MLS® System. Pillar 9â„¢ is the owner of the copyright in its MLS® System. Data is deemed reliable but is not guaranteed accurate by Pillar 9â„¢. The trademarks MLS®, Multiple Listing Service® and the associated logos are owned by The Canadian Real Estate Association (CREA) and identify the quality of services provided by real estate professionals who are members of CREA. Used under license.