

\$1,069,850 - 2908 Palliser Drive Sw, Calgary

MLS® #A2228329

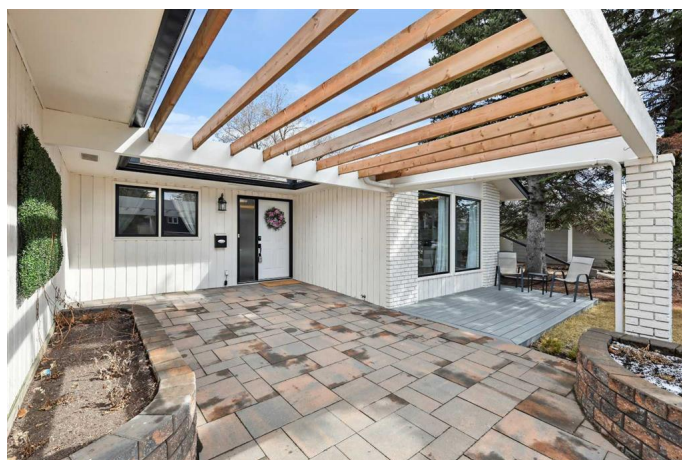
\$1,069,850

5 Bedroom, 3.00 Bathroom, 1,916 sqft

Residential on 0.15 Acres

Oakridge, Calgary, Alberta

Welcome to 2908 Palliser Drive SW, located in the heart of Oakridge Estates, one of Calgary's most established and desirable family communities. Known for its quiet, tree-lined streets, top-rated schools, and unbeatable access to Glenmore Reservoir and South Glenmore Park, Oakridge offers the space, lifestyle, and long-term value that move-up buyers are looking for. Whether it's biking along the reservoir trails, walking to Louis Riel School, or spending weekends at Southland Leisure Centre, this is a neighbourhood families stay in for generations. With a flexible June possession available, this is your chance to make the move in time for summer. This beautifully updated executive bungalow sits on a rare 62-foot-wide lot and offers over 3,500 sq ft of professionally finished living space. Inside, the sunlit main level features a bright and open layout with a formal living room and custom built-ins, and a cozy family room centered around a wood-burning fireplace. The cheerful kitchen includes a central island, sunny breakfast nook, and stainless steel appliances including a new fridge, dishwasher, and garburator. Three spacious bedrooms upstairs include a well-appointed primary suite with dual closets and a private ensuite. A large mudroom connects directly to the oversized double attached garage, keeping daily routines organized and efficient. The fully finished basement adds two more bedrooms, a large rec room, media lounge, and a full wet



barâ€”ideal for entertaining or creating flexible living zones for a growing family. Notable upgrades include a brand new furnace and central A/C, new water softener and humidifier, upgraded trim and casings, and dimmable lighting throughout. Outside, enjoy low-maintenance composite decking in both the front and backyard, mature trees, and a peaceful setting thatâ€™s perfect for summer evenings. With unmatched access to parks, schools, and everyday amenities, this is a rare opportunity to secure a move-in ready home in one of Calgaryâ€™s most treasured southwest neighbourhoods. Book your private showing today.

Built in 1978

Essential Information

MLS® #	A2228329
Price	\$1,069,850
Bedrooms	5
Bathrooms	3.00
Full Baths	3
Square Footage	1,916
Acres	0.15
Year Built	1978
Type	Residential
Sub-Type	Detached
Style	Bungalow
Status	Active

Community Information

Address	2908 Palliser Drive Sw
Subdivision	Oakridge
City	Calgary
County	Calgary
Province	Alberta
Postal Code	T2V 4G2

Amenities

Parking Spaces	4
Parking	Alley Access, Double Garage Attached, Driveway, Garage Faces Front, On Street, Oversized
# of Garages	2

Interior

Interior Features	Bar, Bookcases, Built-in Features, Central Vacuum, Kitchen Island, No Smoking Home, Sump Pump(s), Vinyl Windows, Wet Bar
Appliances	Central Air Conditioner, Dishwasher, Dryer, Gas Stove, Microwave, Window Coverings
Heating	High Efficiency, Forced Air, Natural Gas
Cooling	Central Air, Full
Fireplace	Yes
# of Fireplaces	1
Fireplaces	Brick Facing, Living Room, Wood Burning
Has Basement	Yes
Basement	Finished, Full

Exterior

Exterior Features	Private Yard
Lot Description	Back Lane, Back Yard, Gazebo, Landscaped, Lawn, Many Trees, Rectangular Lot, Street Lighting, Treed
Roof	Asphalt Shingle
Construction	Cedar, Concrete, Wood Frame
Foundation	Poured Concrete

Additional Information

Date Listed	June 5th, 2025
Days on Market	11
Zoning	R-CG

Listing Details

Listing Office	Real Broker
----------------	-------------

Data is supplied by Pillar 9â„¢ MLS® System. Pillar 9â„¢ is the owner of the copyright in its MLS® System. Data is deemed reliable but is not guaranteed accurate by Pillar 9â„¢. The trademarks MLS®, Multiple Listing Service® and the associated logos are owned by The Canadian Real Estate Association (CREA) and identify the quality of services provided by real estate professionals who are members of CREA. Used under license.