

\$545,000 - 612 Aquitania Boulevard W, Lethbridge

MLS® #A2230894

\$545,000

4 Bedroom, 2.00 Bathroom, 1,072 sqft
Residential on 0.09 Acres

Garry Station, Lethbridge, Alberta

WHAT A LOVELY STRANVILLE BUILT HOME JUST WAITING FOR YOUR OCCUPANCY IN THE SUPPER AREA OF GARY STATION

Built in 2015

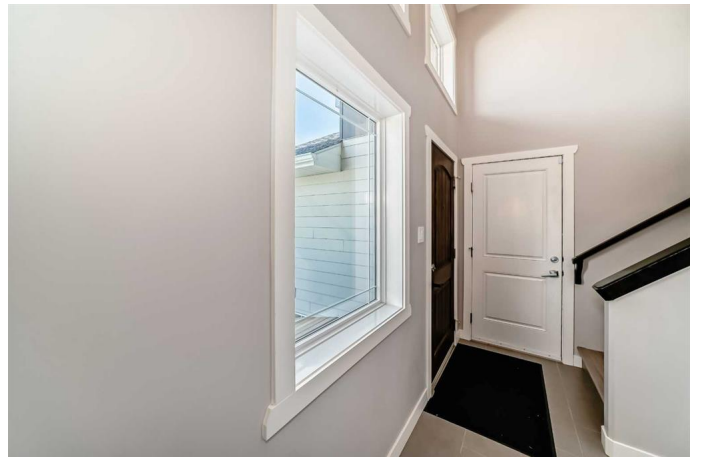
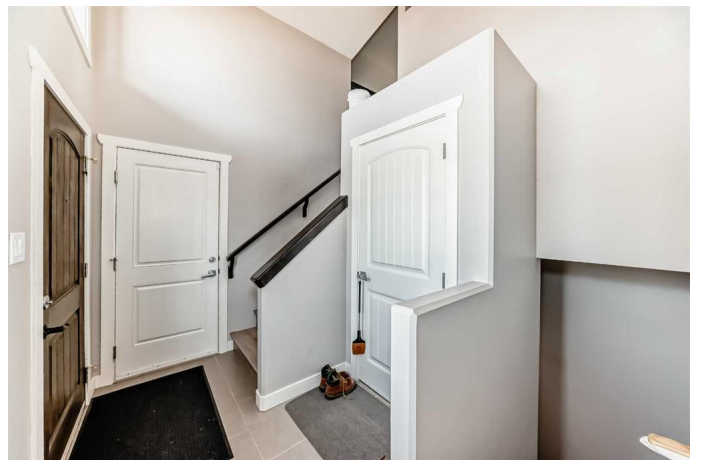
Essential Information

MLS® #	A2230894
Price	\$545,000
Bedrooms	4
Bathrooms	2.00
Full Baths	2
Square Footage	1,072
Acres	0.09
Year Built	2015
Type	Residential
Sub-Type	Detached
Style	Bi-Level, Up/Down
Status	Active

Community Information

Address	612 Aquitania Boulevard W
Subdivision	Garry Station
City	Lethbridge
County	Lethbridge
Province	Alberta
Postal Code	T1J 5G5

Amenities



Parking Spaces	2
Parking	Alley Access, Concrete Driveway, Double Garage Attached, Driveway, Garage Door Opener, Rear Drive
# of Garages	2

Interior

Interior Features	Breakfast Bar, Granite Counters, Jetted Tub, Open Floorplan, Separate Entrance
Appliances	Central Air Conditioner, Dishwasher, Microwave Hood Fan, Refrigerator, Stove(s), Washer/Dryer
Heating	Forced Air, Natural Gas
Cooling	Central Air
Has Basement	Yes
Basement	Finished, Full, Suite, Walk-Up To Grade

Exterior

Exterior Features	Private Entrance, Uncovered Courtyard
Lot Description	Back Lane, Back Yard, City Lot, Front Yard, Garden, Interior Lot, Landscaped, Lawn, Low Maintenance Landscape
Roof	Asphalt Shingle
Construction	Concrete, Wood Frame
Foundation	Poured Concrete

Additional Information

Date Listed	June 17th, 2025
Days on Market	62
Zoning	R-M

Listing Details

Listing Office	RE/MAX REAL ESTATE - LETHBRIDGE
----------------	---------------------------------

Data is supplied by Pillar 9â„¢ MLSÂ® System. Pillar 9â„¢ is the owner of the copyright in its MLSÂ® System. Data is deemed reliable but is not guaranteed accurate by Pillar 9â„¢. The trademarks MLSÂ®, Multiple Listing ServiceÂ® and the associated logos are owned by The Canadian Real Estate Association (CREA) and identify the quality of services provided by real estate professionals who are members of CREA. Used under license.