

\$144,500 - 416, 1648 Saamis Drive Nw, Medicine Hat

MLS® #A2231135

\$144,500

1 Bedroom, 1.00 Bathroom, 550 sqft

Residential on 0.00 Acres

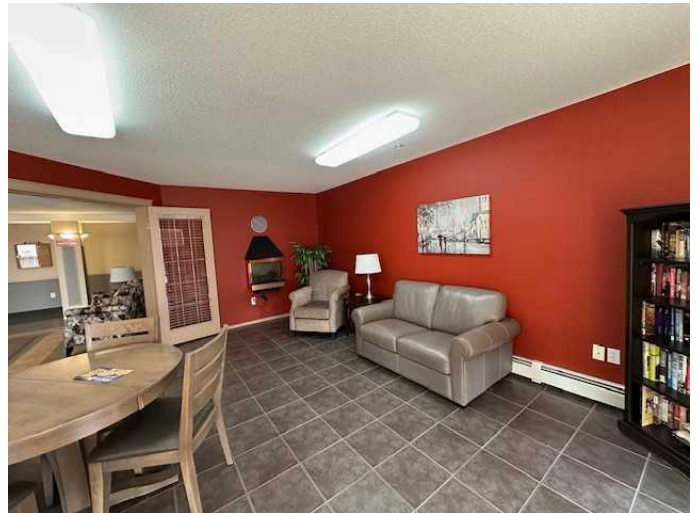
Northwest Crescent Heights, Medicine Hat, Alberta

Affordable (cheaper than rent) top floor condo (no one above) with 2 parking stalls (both with electrical plug ins). Great view from your private deck and with natural gas to the deck to enjoy your BBQ. Enjoy life in this fantastic 1 bedroom with a den, bright open kitchen with dining area, 4 piece bathroom and in suite laundry. This suite was just professionally painted in June 2025 and also just professionally cleaned June 2025 so it is in super "move-on" condition. Quick possession available if desired. This building is well maintained, secured & has easy access to Costco, Co-op place and the number 1 Highway. Pets are allowed (with restriction) and the building also has an elevator for you convenience

Built in 2005

Essential Information

MLS® #	A2231135
Price	\$144,500
Bedrooms	1
Bathrooms	1.00
Full Baths	1
Square Footage	550
Acres	0.00
Year Built	2005
Type	Residential



Sub-Type	Apartment
Style	Single Level Unit
Status	Active

Community Information

Address	416, 1648 Saamis Drive Nw
Subdivision	Northwest Crescent Heights
City	Medicine Hat
County	Medicine Hat
Province	Alberta
Postal Code	T1C2A6

Amenities

Amenities	Laundry
Parking Spaces	2
Parking	Stall

Interior

Interior Features	Track Lighting
Appliances	Dishwasher, Refrigerator, Stove(s), Washer/Dryer Stacked
Heating	Hot Water, Natural Gas
Cooling	Wall Unit(s)
# of Stories	4

Exterior

Exterior Features	BBQ gas line
Construction	Vinyl Siding, Wood Frame

Additional Information

Date Listed	June 13th, 2025
Days on Market	3
Zoning	R-MD

Listing Details

Listing Office	SOURCE 1 REALTY CORP.
----------------	-----------------------

Data is supplied by Pillar 9â„¢ MLS® System. Pillar 9â„¢ is the owner of the copyright in its MLS® System. Data is deemed reliable but is not guaranteed accurate by Pillar 9â„¢. The trademarks MLS®, Multiple Listing Service® and the associated logos are owned by The Canadian Real Estate Association (CREA) and identify the quality of services provided by real estate professionals who are members of CREA. Used under license.