

\$400,000 - 212, 660 Shawnee Square Sw, Calgary

MLS® #A2231654

\$400,000

2 Bedroom, 2.00 Bathroom, 680 sqft

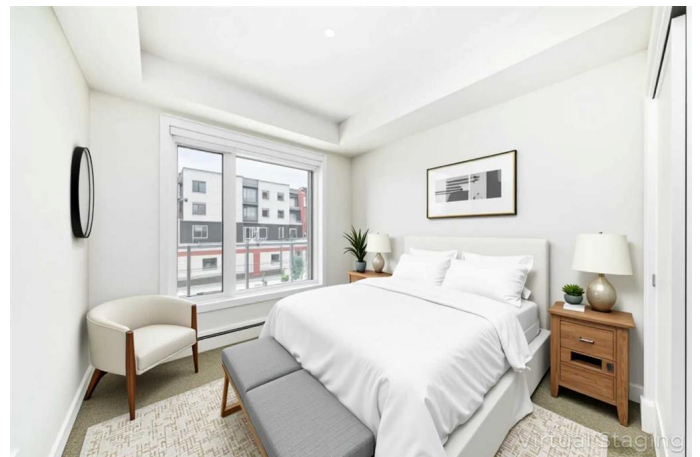
Residential on 0.00 Acres

Shawnee Slopes, Calgary, Alberta

Welcome to vibrant urban living in the heart of Shawnee Slopes—where contemporary design meets nature's tranquility. This beautifully appointed 2-bedroom, 2-bath condominium offers the perfect blend of style, functionality, and location. Set within one of Calgary's most sought-after southwest communities, this home places you just moments from the endless trails and natural beauty of Fish Creek Provincial Park. Whether it's morning walks through the forest, weekend bike rides, or simply enjoying the changing seasons, outdoor enthusiasts will find their haven here.

Built in 2024, this residence combines modern finishes with thoughtful design. The open-concept layout maximizes natural light and flow, creating an inviting atmosphere for both daily living and entertaining. The kitchen features sleek cabinetry and stainless steel appliances, while both bedrooms are generously sized with ample closet space. Two full bathrooms—including a private ensuite—offer comfort and privacy for residents and guests alike. Added conveniences include titled underground parking and a titled storage unit, providing both security and peace of mind.

Beyond the home itself, Shawnee Slopes is a well-connected, established neighbourhood with a peaceful residential feel. Enjoy quick access to transit, including the nearby LRT



station, making downtown commutes simple and stress-free. Shopping, dining, schools, and services are all close at hand, while the community's green spaces and mature trees add to the overall charm. Whether you're a first-time buyer, downsizing, or seeking an investment in a growing area, this home offers exceptional lifestyle and value in one of Calgary's most naturally beautiful settings. Photos are virtually staged.

Built in 2024

Essential Information

MLS® #	A2231654
Price	\$400,000
Bedrooms	2
Bathrooms	2.00
Full Baths	2
Square Footage	680
Acres	0.00
Year Built	2024
Type	Residential
Sub-Type	Apartment
Style	Single Level Unit
Status	Active

Community Information

Address	212, 660 Shawnee Square Sw
Subdivision	Shawnee Slopes
City	Calgary
County	Calgary
Province	Alberta
Postal Code	T2Y 0X6

Amenities

Amenities	Elevator(s), Parking, Secured Parking, Storage, Visitor Parking
Parking Spaces	1
Parking	Parkade, Secured, Titled, Underground

Interior

Interior Features	Breakfast Bar, Elevator, Kitchen Island, Storage
Appliances	Electric Range, Microwave Hood Fan, Refrigerator, Washer/Dryer, Window Coverings
Heating	Baseboard
Cooling	None
# of Stories	4

Exterior

Exterior Features	Balcony, Storage
Construction	Wood Frame

Additional Information

Date Listed	June 20th, 2025
Days on Market	18
Zoning	DC

Listing Details

Listing Office	CIR Realty
----------------	------------

Data is supplied by Pillar 9â„¢ MLS® System. Pillar 9â„¢ is the owner of the copyright in its MLS® System. Data is deemed reliable but is not guaranteed accurate by Pillar 9â„¢. The trademarks MLS®, Multiple Listing Service® and the associated logos are owned by The Canadian Real Estate Association (CREA) and identify the quality of services provided by real estate professionals who are members of CREA. Used under license.