

\$429,900 - 1036 25 Street N, Lethbridge

MLS® #A2244152

\$429,900

4 Bedroom, 2.00 Bathroom, 1,097 sqft

Residential on 0.13 Acres

Park Meadows, Lethbridge, Alberta

Tucked away in a quiet cres. (only 1 neighbor), upgraded bungalow, kitchen, bathroom, roof, furnace, a/c, fascia, soffits & more. Fully developed (suite potential) huge concrete patio area, partially covered and check out this garage 23' x 29', heated with 10' ceilings, WOW! Plus a 16' x 9' wired shed. What are you waiting for? SELLER WILL TAKE TRADES!! Need to sell first? No problem â€” weâ€™ll buy your house! ????? Hurry â€” opportunities like this donâ€™t wait!

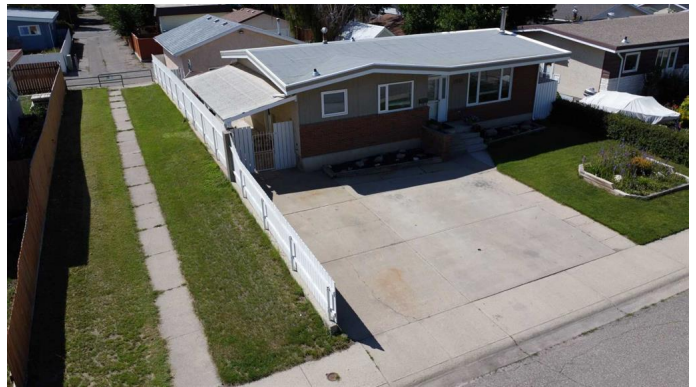
Built in 1970

Essential Information

| | |
|----------------|-------------|
| MLS® # | A2244152 |
| Price | \$429,900 |
| Bedrooms | 4 |
| Bathrooms | 2.00 |
| Full Baths | 2 |
| Square Footage | 1,097 |
| Acres | 0.13 |
| Year Built | 1970 |
| Type | Residential |
| Sub-Type | Detached |
| Style | Bungalow |
| Status | Active |

Community Information

Address 1036 25 Street N



| | |
|-------------|--------------|
| Subdivision | Park Meadows |
| City | Lethbridge |
| County | Lethbridge |
| Province | Alberta |
| Postal Code | T1H 3V8 |

Amenities

| | |
|----------------|---|
| Parking Spaces | 4 |
| Parking | Double Garage Attached, Garage Door Opener, Heated Garage, Alley Access |
| # of Garages | 2 |

Interior

| | |
|-------------------|---|
| Interior Features | Central Vacuum, Pantry, See Remarks, Vinyl Windows |
| Appliances | Central Air Conditioner, Dishwasher, Electric Range, Refrigerator, Washer/Dryer |
| Heating | Forced Air |
| Cooling | Central Air |
| Has Basement | Yes |
| Basement | Finished, Full |

Exterior

| | |
|-------------------|-----------------------|
| Exterior Features | Storage |
| Lot Description | Back Lane, Landscaped |
| Roof | Flat Torch Membrane |
| Construction | Mixed |
| Foundation | Poured Concrete |

Additional Information

| | |
|----------------|-----------------|
| Date Listed | July 29th, 2025 |
| Days on Market | 7 |
| Zoning | R-L |

Listing Details

| | |
|----------------|----------------------------|
| Listing Office | Lethbridge Real Estate.com |
|----------------|----------------------------|

Data is supplied by Pillar 9â„¢ MLS® System. Pillar 9â„¢ is the owner of the copyright in its MLS® System. Data is deemed reliable but is not guaranteed accurate by Pillar 9â„¢. The trademarks MLS®, Multiple Listing Service® and the associated logos are owned by The Canadian Real Estate Association (CREA) and identify the quality of services provided by real estate professionals who are members of CREA. Used under license.