

\$599,900 - 139 Manora Drive Ne, Calgary

MLS® #A2247762

\$599,900

4 Bedroom, 3.00 Bathroom, 1,216 sqft

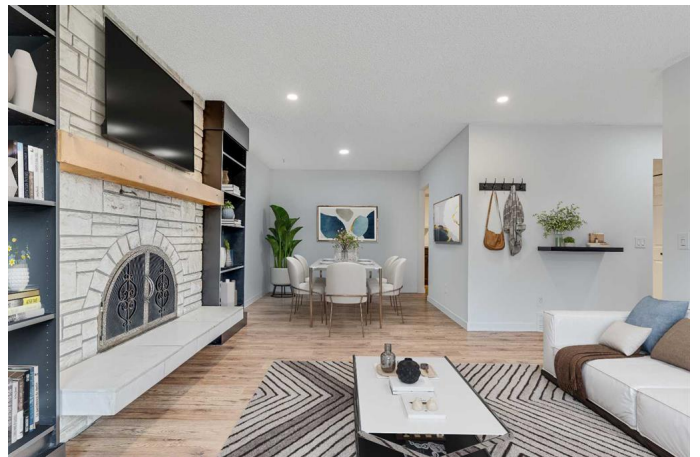
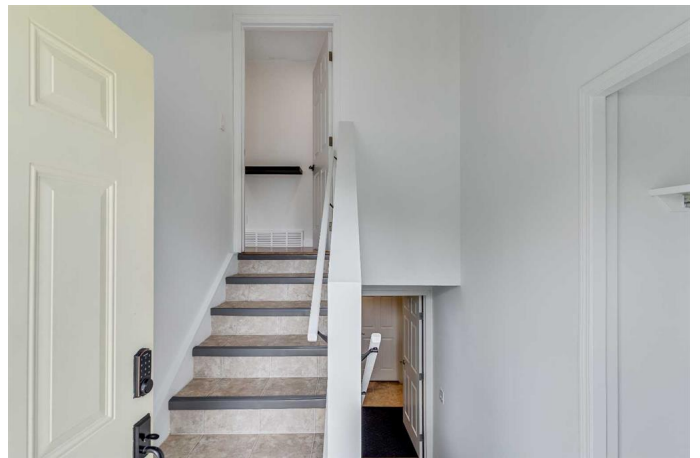
Residential on 0.14 Acres

Marlborough Park, Calgary, Alberta

open house Saturday august 23- 12pm-2pm.

Incredible opportunity to own an UPDATED property with a FULL LEGAL SUITE! Situated on a quiet street with a WEST BACK YARD.

As you approach you will notice the extra large lot, convenient driveway for parking, RECENTLY REPLACED ROOF, NEW EAVES and NEW WINDOWS! Pride of ownership is evident throughout. A shared front foyer separates the two suites. The upstairs main suite boasts stunning hard surface floors and fresh paint. The bright living room is illuminated with light from the extra large windows and showcases a wood fireplace with built in shelving, wood mantle, stone detail and a TV mount. This seamlessly opens to the spacious dining room. Adjacent you will find a trendy two tone "L Shaped" kitchen, with cabinets that reach to the ceiling, accented with gold hardware and a timeless subway backsplash. The kitchen sink with upgraded plumbing fixture looks onto your private backyard with mature trees. Just off the kitchen there is direct access to a recently relandscaped outdoor oasis with a gazebo, patio, shed, and ample grassy area ideal for outdoor gatherings and BBQs. The updated 4 piece main bath showcases stylish black plumbing fixtures and hardware. The suite also includes a newer stacked laundry room, two well sized bedrooms, and an expansive primary with a 3 piece ensuite including a luxurious fully tiled shower with multiple shower heads. The lower level has big



windows making the space seem bright. On one side it features a large living room with a wood burning fireplace with the opposite side offering a full kitchen and dining room space. This suite not only has its own laundry room, an updated 4 piece bath, tons of storage, but a massive bedroom easily accommodating two beds, or a den space. Enjoy the COMFORTS OF AIRCONDITIONING the peace of mind of a new furnace (1 year old), newer hot water tank, and security cameras. No detail was overlooked from designer lights, and pot lights, to additional insulation in the attic and triple pane windows for year round comfort and energy savings! Walking distance to schools, parks, groceries and essentials including registry and health services. Only 13 minutes to downtown and convenient access to the Trans Canada Highway and both Stoney Trail and Deerfoot Trail. This opportunity won't last long view the virtual tour or book your private tour today!

Built in 1974

Essential Information

MLS® #	A2247762
Price	\$599,900
Bedrooms	4
Bathrooms	3.00
Full Baths	3
Square Footage	1,216
Acres	0.14
Year Built	1974
Type	Residential
Sub-Type	Detached
Style	Bi-Level
Status	Active

Community Information

Address	139 Manora Drive Ne
Subdivision	Marlborough Park
City	Calgary
County	Calgary
Province	Alberta
Postal Code	T2A 4P6

Amenities

Parking Spaces	2
Parking	Off Street, Stall

Interior

Interior Features	Bookcases, Open Floorplan, Separate Entrance, Vinyl Windows, Recessed Lighting
Appliances	Dishwasher, Electric Stove, Range Hood, Refrigerator, Washer/Dryer, Washer/Dryer Stacked, Window Coverings
Heating	Forced Air, Natural Gas
Cooling	Central Air
Fireplace	Yes
# of Fireplaces	2
Fireplaces	Wood Burning
Has Basement	Yes
Basement	Finished, Full, Suite

Exterior

Exterior Features	Other, Private Yard
Lot Description	Gazebo, Landscaped, Lawn, Level, Treed
Roof	Asphalt Shingle
Construction	Brick, Stucco, Aluminum Siding
Foundation	Poured Concrete

Additional Information

Date Listed	August 22nd, 2025
Zoning	R-CG

Listing Details

Listing Office	CIR Realty
----------------	------------

Data is supplied by Pillar 9â„¢ MLSÂ® System. Pillar 9â„¢ is the owner of the copyright in its MLSÂ® System. Data is deemed reliable but is not guaranteed accurate by Pillar 9â„¢. The trademarks MLSÂ®, Multiple Listing ServiceÂ® and the associated logos are owned by The Canadian Real Estate Association (CREA) and identify the quality of services

