

# \$689,900 - 106 Lakeview Inlet, Chestermere

MLS® #A2252960

**\$689,900**

4 Bedroom, 3.00 Bathroom, 2,426 sqft

Residential on 0.11 Acres

Lakeview Landing, Chestermere, Alberta

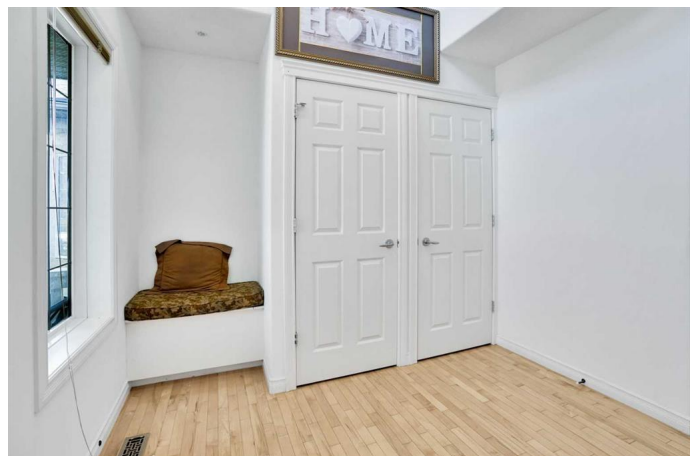
Welcome to Lakeview Landing in Chestermere!

This beautiful detached home sits in the heart of an exquisite community, just steps away from Chestermere Lake and close to all amenities. Offering over 2,400 sqft of thoughtfully designed living space, this property is perfect for families seeking comfort, convenience, and modern living.

As you enter, youâ€™re greeted by a spacious foyer with an open-to-above design that creates a grand first impression. To the left, a versatile den offers the ideal space for a home office or additional living area. The open-concept main floor features a bright living room with a cozy gas fireplace and large windows, filling the space with natural light. The modern kitchen is complete with stainless steel appliances, a walk-in pantry with direct garage access, and an island that overlooks the dining and living areasâ€”perfect for entertaining. A convenient 2-piece bathroom completes the main level.

Upstairs, youâ€™ll find a spacious bonus room with large windows, two generously sized bedrooms sharing a 4-piece bathroom, and a private primary retreat. The primary suite includes a walk-in closet and a luxurious 5-piece ensuite with dual sinks, a soaker tub, and a separate shower.

The partially finished basement offers a fourth



bedroom and plenty of storage, giving you the opportunity to customize the space to your needs. Outside, enjoy a fully fenced backyard with an oversized deck—ideal for summer evenings and BBQs.

Additional highlights include: Central A/C, central vacuum, heated garage, and dual furnaces for year-round comfort.

This home truly combines elegance, functionality, and location. Don't miss your chance to experience lakeside living at its finest!

Built in 2003

**Essential Information**

MLS® #	A2252960
Price	\$689,900
Bedrooms	4
Bathrooms	3.00
Full Baths	2
Half Baths	1
Square Footage	2,426
Acres	0.11
Year Built	2003
Type	Residential
Sub-Type	Detached
Style	2 Storey
Status	Active

**Community Information**

Address	106 Lakeview Inlet
Subdivision	Lakeview Landing
City	Chestermere
County	Chestermere
Province	Alberta
Postal Code	T1X 1G9

**Amenities**

Parking Spaces	4
Parking	Double Garage Attached
# of Garages	2

## Interior

Interior Features	Ceiling Fan(s), High Ceilings, Kitchen Island, No Animal Home, No Smoking Home, Pantry, Quartz Counters
Appliances	Central Air Conditioner, Dishwasher, Dryer, Electric Range, Microwave, Range Hood, Refrigerator, Washer, Window Coverings
Heating	Forced Air
Cooling	Central Air
Fireplace	Yes
# of Fireplaces	1
Fireplaces	Gas
Has Basement	Yes
Basement	Full, Partially Finished

## Exterior

Exterior Features	None
Lot Description	Back Yard, Street Lighting
Roof	Asphalt Shingle
Construction	Concrete, Stone, Vinyl Siding, Wood Frame
Foundation	Poured Concrete

## Additional Information

Date Listed	August 31st, 2025
Days on Market	2
Zoning	R-1

## Listing Details

Listing Office	RE/MAX House of Real Estate
----------------	-----------------------------

Data is supplied by Pillar 9â„¢ MLS® System. Pillar 9â„¢ is the owner of the copyright in its MLS® System. Data is deemed reliable but is not guaranteed accurate by Pillar 9â„¢. The trademarks MLS®, Multiple Listing Service® and the associated logos are owned by The Canadian Real Estate Association (CREA) and identify the quality of services provided by real estate professionals who are members of CREA. Used under license.