

\$608,000 - 28 Whitworth Road Ne, Calgary

MLS® #A2261737

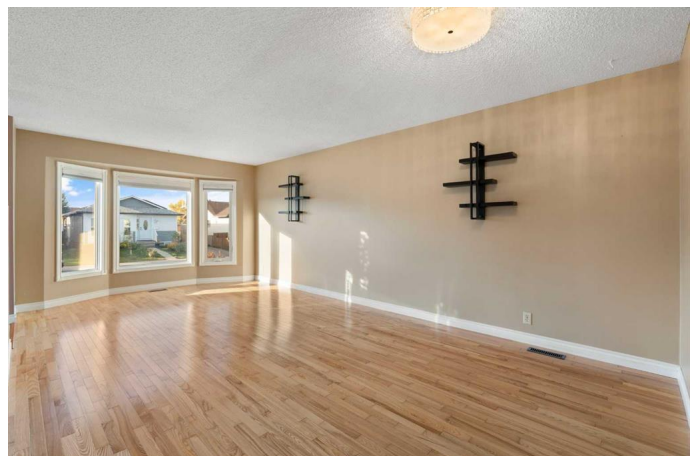
\$608,000

4 Bedroom, 2.00 Bathroom, 1,110 sqft

Residential on 0.10 Acres

Whitehorn, Calgary, Alberta

Tucked into the welcoming community of Whitehorn, this 2,100+ sq. ft. fully developed residence delivers both comfort and opportunity, designed to fit the way modern families live, grow, and gather. Step inside to a bright main floor framed by a charming bay window that floods the living room with natural light. The flow into the dining area and kitchen creates an inviting heart of the home, perfect for both casual meals and lively family dinners. The kitchen itself shines with crisp white cabinetry, updated hardware, stainless steel appliances, and a convenient pantry. Three bedrooms including a spacious primary retreat tucked quietly at the back make this floor ideal for restful nights and daily ease. A refreshed four-piece bathroom features a newer maple vanity and tiled walk-in shower for a modern touch. The fully developed lower level expands the home's lifestyle options. A massive recreation room with pot lighting and a cozy wood-burning fireplace sets the stage for game nights, movie marathons, or multigenerational living. A second kitchen, full bathroom, an additional bedroom and flex room create a private and functional space with suite potential (subject to city approval and permitting), whether for extended family, guests, or income generation. Beyond the interiors, thoughtful updates add lasting value: triple-glazed windows, central air conditioning, new exterior doors, and a brand new WiFi-compatible garage door w/ camera on the double detached garage. Hardwood and vinyl



flooring, ample storage, and both a storage shed and parking pad perfect for RV parking further enhance everyday convenience. Outside, a concrete patio and fenced yard provide a perfect setting for summer barbecues and weekend relaxation. What truly sets this address apart is its location. Whitehorn is a family-friendly community known for its schools, parks, and accessibility. Youâ€™re within walking distance of playgrounds and local schools, with Colonel J. Fred Scott School just minutes away. Daily errands are simple with Sunridge Mall, grocery stores, and restaurants close at hand, while Peter Lougheed Centre offers nearby healthcare access. For commuters, it doesnâ€™t get more convenient - Whitehorn LRT Station is only minutes away, connecting you seamlessly to downtown Calgary, the airport, and beyond. With its combination of space, upgrades, and unbeatable location, 28 Whitworth Road NE is more than a house - itâ€™s a lifestyle opportunity in one of Calgaryâ€™s most connected neighborhoods. Donâ€™t wait to experience it for yourself. Book your private showing today and imagine the life youâ€™ll build here. *Some photos are virtually staged.*

Built in 1983

Essential Information

MLS® #	A2261737
Price	\$608,000
Bedrooms	4
Bathrooms	2.00
Full Baths	2
Square Footage	1,110
Acres	0.10
Year Built	1983
Type	Residential

Sub-Type	Detached
Style	Bungalow
Status	Active

Community Information

Address	28 Whitworth Road Ne
Subdivision	Whitehorn
City	Calgary
County	Calgary
Province	Alberta
Postal Code	T1Y 6A7

Amenities

Parking Spaces	3
Parking	Double Garage Detached, Parking Pad
# of Garages	2

Interior

Interior Features	Central Vacuum, Pantry
Appliances	Central Air Conditioner, Dishwasher, Electric Stove, Microwave Hood Fan, Refrigerator, Washer/Dryer, Window Coverings
Heating	Forced Air, Natural Gas
Cooling	Central Air
Fireplace	Yes
# of Fireplaces	1
Fireplaces	Wood Burning
Has Basement	Yes
Basement	Finished, Full

Exterior

Exterior Features	None
Lot Description	Back Lane, Back Yard, Rectangular Lot
Roof	Asphalt Shingle
Construction	Vinyl Siding
Foundation	Poured Concrete

Additional Information

Date Listed	October 3rd, 2025
Days on Market	1

Zoning

R-CG

Listing Details

Listing Office

Royal LePage Benchmark

Data is supplied by Pillar 9â„¢ MLS® System. Pillar 9â„¢ is the owner of the copyright in its MLS® System. Data is deemed reliable but is not guaranteed accurate by Pillar 9â„¢. The trademarks MLS®, Multiple Listing Service® and the associated logos are owned by The Canadian Real Estate Association (CREA) and identify the quality of services provided by real estate professionals who are members of CREA. Used under license.